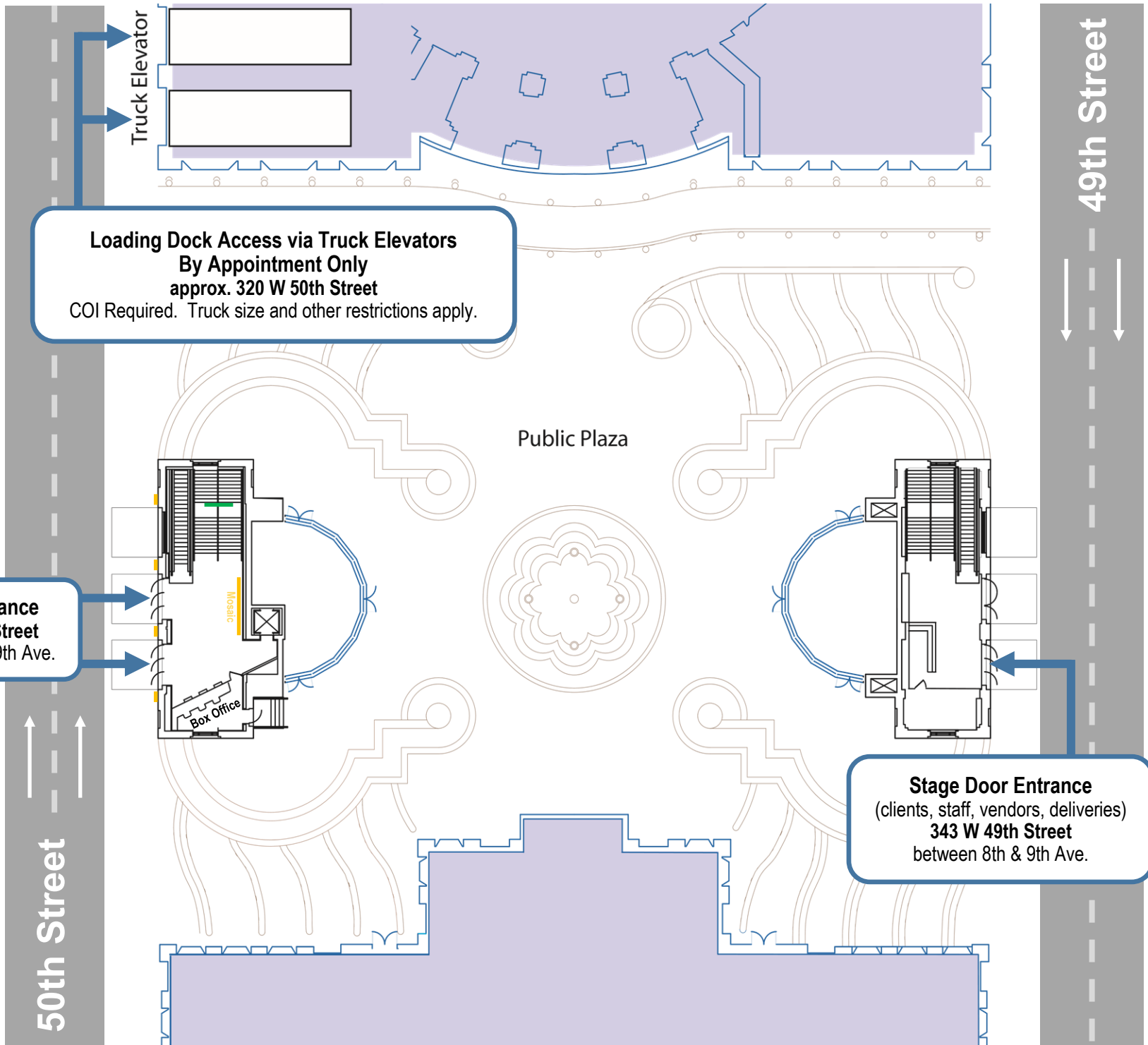




NEW WORLD STAGES

PLAZA

(STREET-LEVEL)



Loading Dock Access via Truck Elevators
By Appointment Only
approx. 320 W 50th Street
COI Required. Truck size and other restrictions apply.

Patron Entrance
340 W 50th Street
between 8th & 9th Ave.

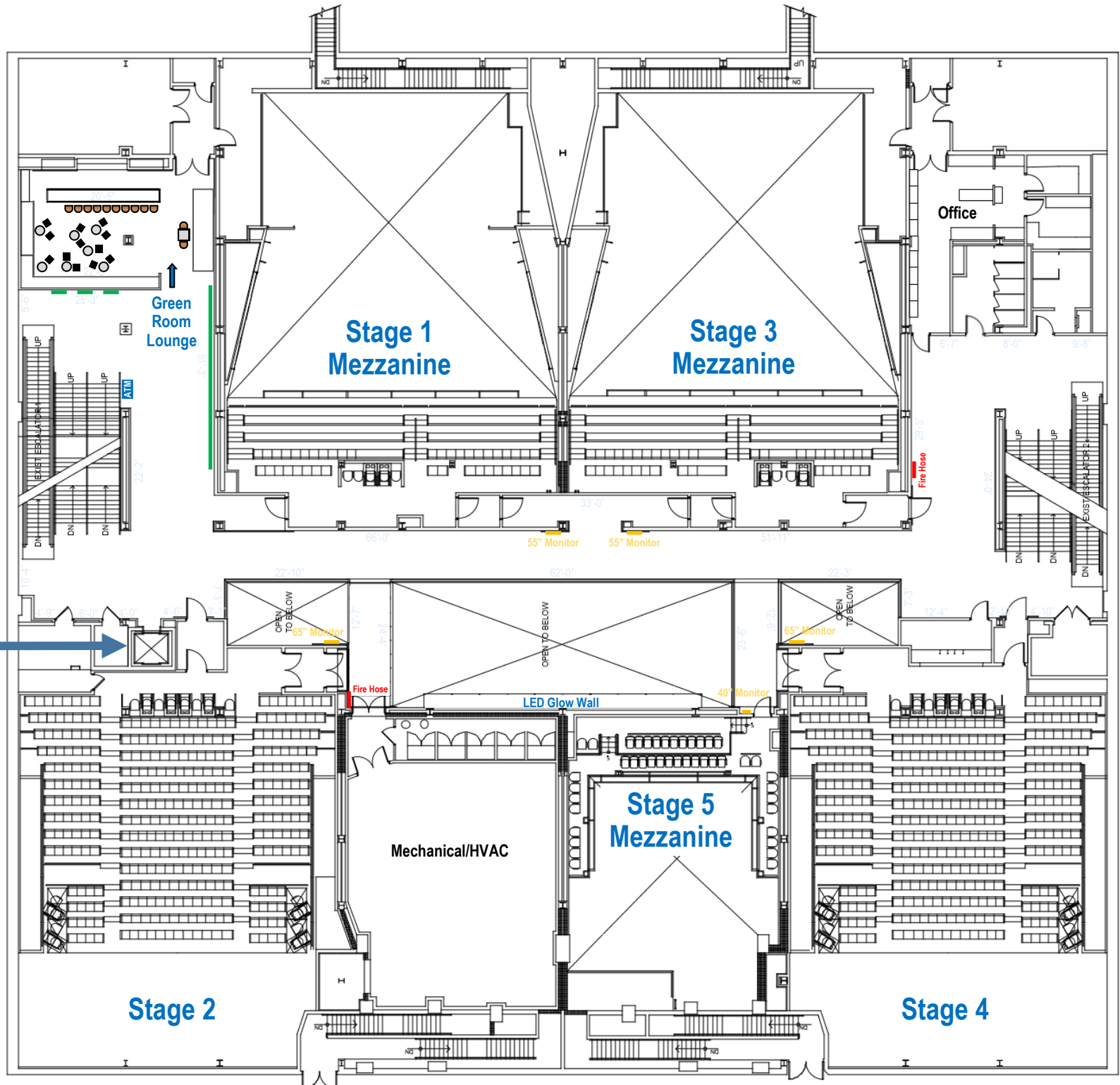
Stage Door Entrance
(clients, staff, vendors, deliveries)
343 W 49th Street
between 8th & 9th Ave.

50th Street

49th Street



NEW WORLD STAGES
MEZZANINE



Passenger Elevator:

- Max weight 2000 lbs.
- Door width 2'-9"
- Interior Width 5'-6"
- Interior Depth 4'-0" (wall to wall)
- Interior Depth 4'-11" (door to door)
- Accessible via 50th Street Patron Entrance

NEW WORLD STAGES ORCHESTRA

